

# DYDD SUL 15<sup>FED</sup> SUNDAY 15<sup>TH</sup>



Bilingual Eucharist Service  
Esgob Enlli  
Bishop of Bardsey  
Rt Revd David Morris  
10:30 - 11:30

Eglwys St Hywyns Church, Aberdaron  
Gwasanaeth Cymun Bendigaid Dwyieithog.



Walking in Thomas's  
Footsteps with  
Susan Fogarty  
14:00 – 15:30 £12

Starting at St Hywyn's Church, this 3-mile circular walk alongside the Daron river, stopping along the way for the reading of his poems.

*Dyma daith gerdded dair milltir sy'n cychwyn yn Eglwys Sant Hywyn ar lannau afon Daron.*



Through the Keyhole:  
Look Inside Sarn y  
Plas, Rhiw LL53 8AA  
12:00 - 13:00 Sat & Sun

The retirement home of RS Thomas and ME Eldridge



Cynefin  
Poetry Readings  
Mary Robinson  
16:30-17:30 Friday  
14:00-15:00 Sunday  
**FREE** Limited to 10

# CYNGERDD 2025 CONCERT

Dydd Sadwrn  
Saturday  
19:30 - 20:30

£12

*The Bright Field : Das Helle Feld  
Maes y Golau*  
Eglwys St Hywyn Church  
*Premiere Performance Wolfgang Niemeyer*



Alexander Meyrick  
Bassoon

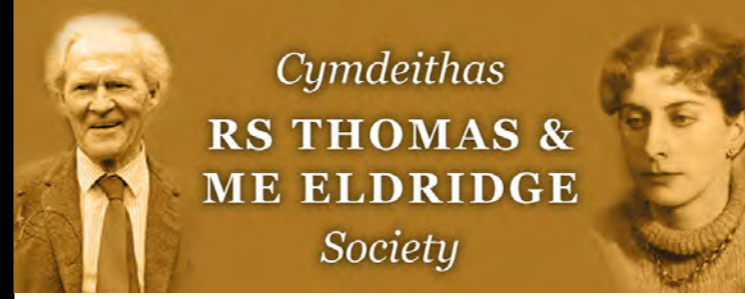
Sarah Newbold  
Flute

## Booking & Information

Tickets available via  
[www.rsthomapoetry.co.uk](http://www.rsthomapoetry.co.uk) & [www.eventbrite.co.uk](http://www.eventbrite.co.uk)  
Postal Booking Form via email:  
[info.thomaseldridgesociety@gmail.com](mailto:info.thomaseldridgesociety@gmail.com)  
01758 719 604

**15% Discount to Society Members**

Collectors Book Sale | Arwerthiant Llyfrau Casglwyr  
18:30 - 19:30 Friday & 10:00 - 16:30 Saturday  
Ysgol Crud y Werin School



Cymdeithas  
RS THOMAS &  
ME ELDRIDGE  
Society

## Membership | Aelodaeth

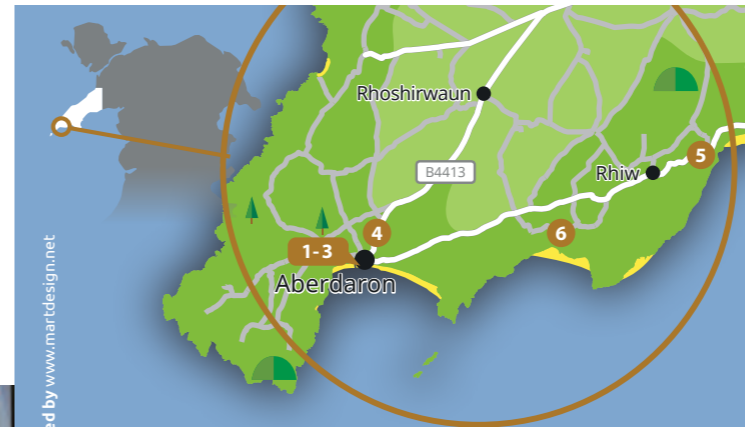
ANNUAL £20 FAMILY £30 LIFE £200

This is your opportunity to invest in the future of the Society and the annual Festivals, so that your life may continue to be enriched by the extraordinary work of Thomas and Eldridge.

FLYNYDDOL £20 DEULU £30 OES £200

Dyma eich cyfle i fuddsoddi yn nyfodol y Cymdeithas a'r Gwyliau blynyddol, fel y bydd eich bywyd chi yn dal i gael eu cyfoethogi gan weithiau eithriadol Thomas ac Eldridge.

Membership Form: [www.rsthomapoetry.co.uk](http://www.rsthomapoetry.co.uk)  
Email: [info.thomaseldridgesociety@gmail.com](mailto:info.thomaseldridgesociety@gmail.com)



- 1 Eglwys St Hywyn Church
- 2 Sailing Clwb Hwyllo
- 3 Porth y Swnt NT Car Park
- 4 Ysgol Crud y Werin School
- 5 Sarn y Plas, Y Rhiw
- 6 St Maelrhys, Porth Ysgo & Lloft RS Thomas

BRECON  
CHOIR  
FESTIVAL

2025  
GWYL GORAWL  
ABERHONDDU

16 - 20 July  
RS THOMAS:  
MUSIC, MAN ... MACHINE  
[www.breconchoirfestival.co.uk](http://www.breconchoirfestival.co.uk)

Poetry &  
Arts Festival

11  
YEARS



ABERDARON  
12-15/06/25

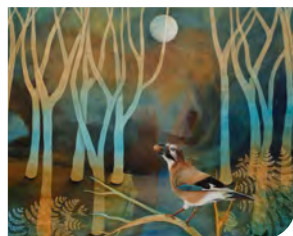
## Gŵyl Celf a Beirdd

SCIENCE | THEOLOGY | CREATION  
GWYDDONIAETH | DIWINYDDIAETH | CREADIGAETH





## DYDD GWENER 13<sup>EG</sup> FRIDAY 13<sup>TH</sup>



Art Workshop:  
From My Garden  
*Therese Urbanska*  
10:30-16:00 **£68**  
Limited to 10

*Sarn y Plas Cottage, Y Rhiw LL53 8AA*

Using acrylic paints with accentuated touches of collage. Inspired by ME Eldridge's children's book *In My Garden*, Sarn y Plas. There will be freedom to paint botanicals in the garden or the landscape within the garden or beyond.

Therese's paintings *The Dance of Life* are exhibited at Oriel Plas Glyn y Weddw, Llanbedrog LL53 7TT. **Free Entry.**

[www.oriel.org.uk](http://www.oriel.org.uk)



Ecology & Poetry  
in a Wildflower  
Meadow  
*Susan Fogarty*  
10:30-11:45 **£12**  
Limited to 20

*Gorlan Hen, Rhydlios LL53 8HL*

Walk in the wildflower meadow and listen to Thomas's poetry speak into the space.

*Ecoleg a Barddoniaeth mewn Maes  
Blodau Gwyllt.*



'The Wound of  
Knowledge': R S  
Thomas' Poetics  
of Science and  
Religion  
*Prof. Wilson Poon*  
14:00-15:15 **£12**  
Limited to 40

*Sailing Club, Aberdaron LL53 8BE*

*This venue is upstairs without a lift.*

The Science-Religion interaction through the lens of literature – how poets explore this relationship.

*Ac yntau'n Gristion, bu'n rhan o'r ddadl  
gwyddoniaeth-crefydd ers blynyddoedd ac  
mae'n dysgu'r pwnc yn ysgol Diwinyddiaeth y  
brifysgol Edinburgh.*



'R. S. Thomas as  
a Science-Mystic:  
Navigating Faith  
Using Science'  
*Mandir Dighe*  
15:30 – 16:45 **£12**  
Limited to 40

*Sailing Club, Aberdaron LL53 8BE*

*This venue is upstairs without a lift.*

The connections between scientific and spiritual inquiry – how they might be complementary.

*Mae ganddi ddiddordeb dwfn mewn profiadau  
cyfriniol a'r cysylltiad rhwng gwyddoniaeth ac  
athroniaeth.*



'Science and Faith  
in the Poetry of  
R.S. Thomas'  
*Prof. Richard Bowen*  
19:30-20:30 **£12**  
Limited to 50

*School Hall Ysgol Crud y Werin LL53 8BP*

The relationship between science and faith, and the use of engineering for the promotion of peace and wellbeing.

*Ymhlith ei gyhoeddiadau mae astudiaethau o  
farddoniaeth Dannie Abse, Anne Cluysenaar,  
John Ormond, R.S. Thomas and Vernon Watkins.*

## DYDD SADWRN 14<sup>EG</sup> SATURDAY 14<sup>TH</sup>

Day Ticket **£30** 10:30 - 16:30

*Ysgol Crud y Werin School LL53 8BP*



'Doing Theology  
where Physics and  
Philosophy Meet'  
*Dr Joanna Penberthy*  
10:30 - 11:45 **£12**

The former Bishop's Ph.D. in quantum physics and a thesis titled "Reading the 'Paradoxical Book of Bell'. A case study in Theology & Science".

*Wedi hynny bu'n gweinidogaethu fel Diacon,  
Swyddog Taleithiol, Offeiriad Plwyf, Warden  
Darllenwyr ac Esgob Tyddewi.*



'Progress is not  
with the machine'  
R.S. Thomas  
versus modernity.  
*Dr Grahame Davies*  
13:30-14:45 **£12**

*'Sefyll yn y Bwlch' (Standing in the Gap)  
Simone Weil, TS Eliot, Saunders Lewis: All  
fellow-opponents of modernity in their own  
nations.*

*Bardd, nofelydd, golygydd a beirniad  
llynyddol toreithiog. Mae'n awdur 19 o lyfrau,  
Cymraeg a Saesneg, mewn gwahanol  
genres gan ennill nifer o wobrau yn  
cynnwys Llyfr y Flwyddyn yng Nghymru.*



'Slow chemistry  
of the soil':  
Devotional Poets  
Consider the  
Creation  
*Prof. Helen Wilcox*  
15:00 -16:15 **£12**

**Jim Cotter Memorial Lecture**

Helen has lectured across five continents on devotional poetry in English from the sixteenth to the twenty-first century.

*Hi yw golygydd y gyfrol arbennig English  
Poems of George Herbert ac mae'n  
cydweithio â Mark Oakley i baratoi'r  
'Cambridge Companion to Devotional Poetry'.*